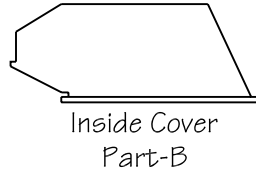
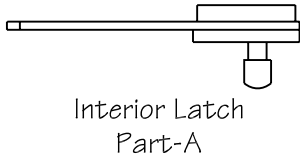
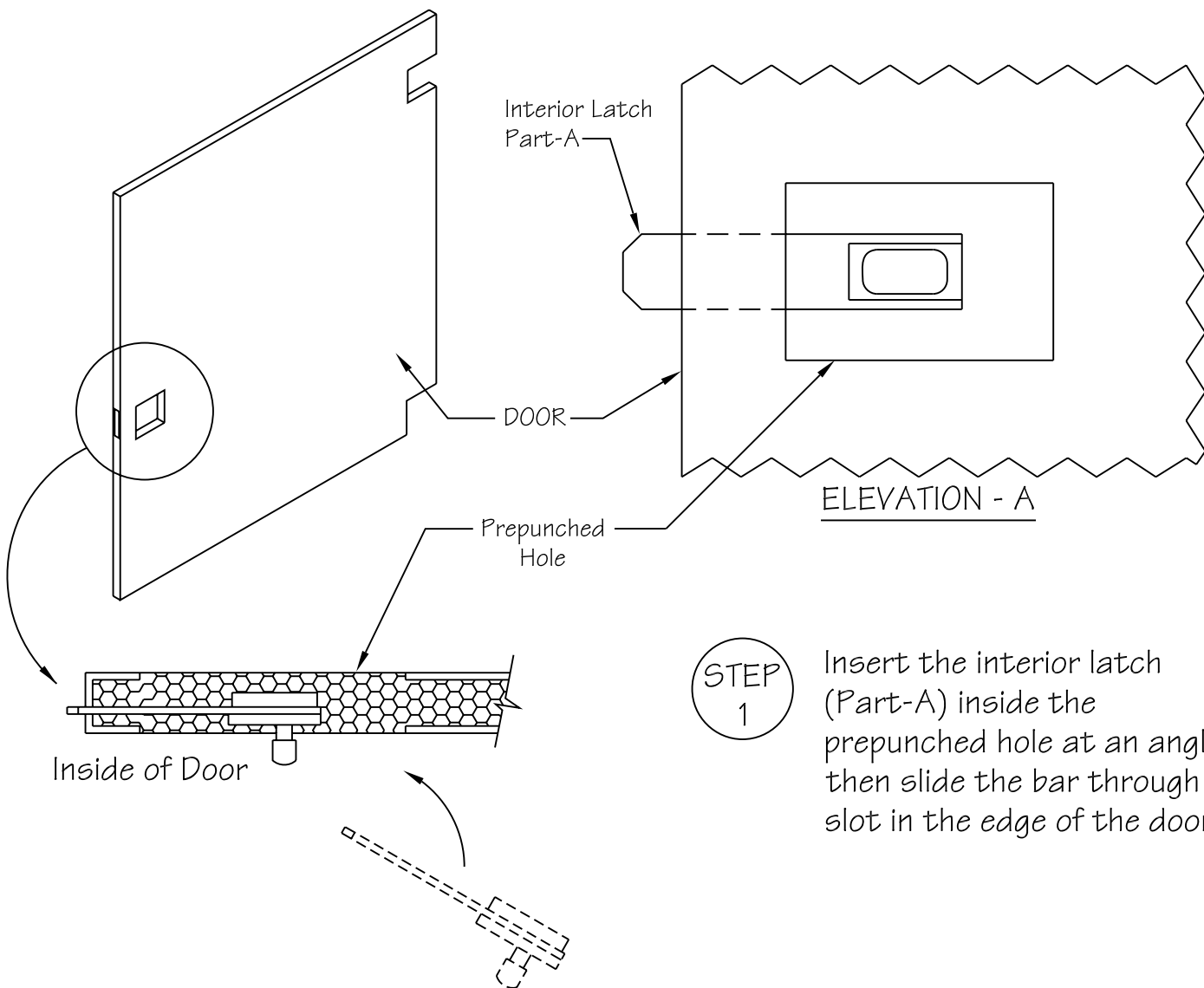


CONCEALED LATCH INSTALLATION PROCEDURE

for Powder Shield or Stainless Steel doors - Page 1 of 2



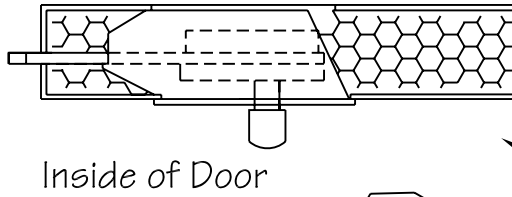
IMPORTANT: Install the door first!
Also... be sure that the knob from Part-A is inside the stall.



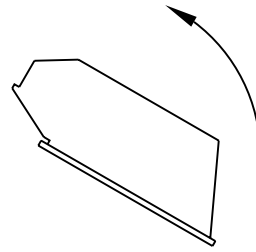
**Partition
Stalls**

info@partitionstalls.com
646-453-4564

STEP
2

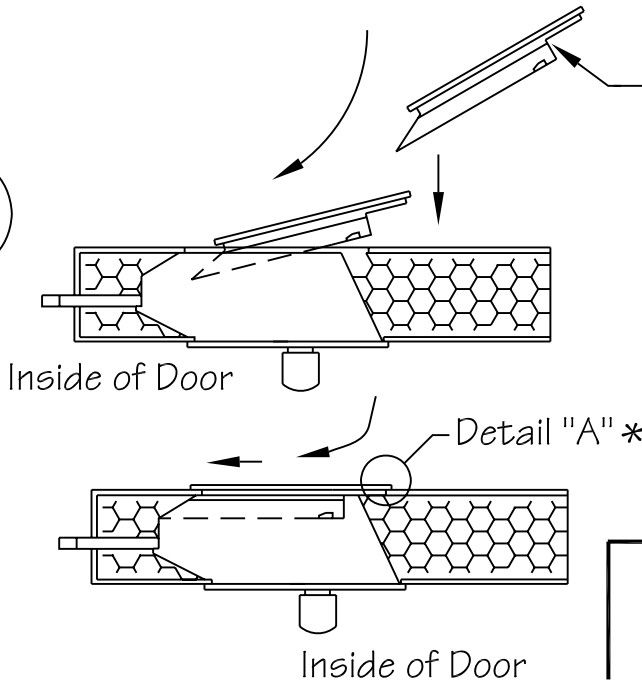


Inside of Door



Hold the slide bar and slide the Inside Cover (Part-B) through the hole and over the Interior Latch (Part-A). The handle will come through the rectangular hole in the cover (Part-B).

STEP
3

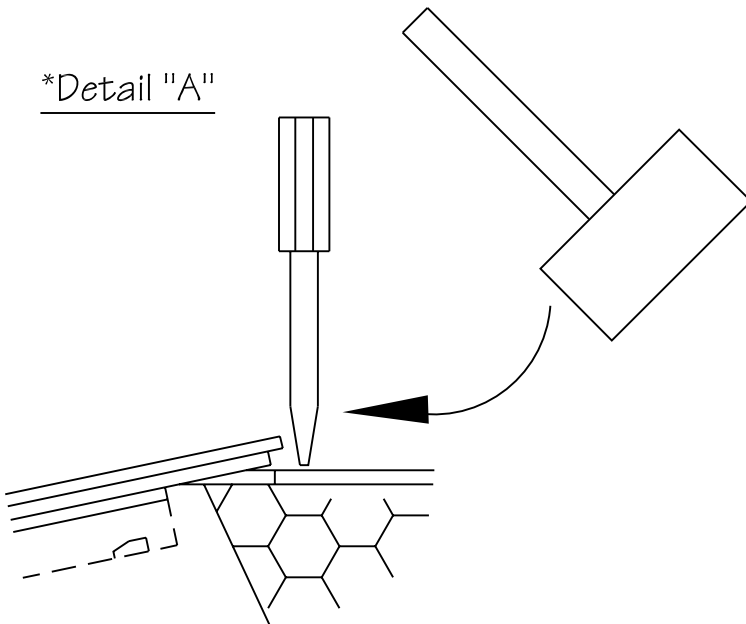


Inside of Door

Detail "A" *

Inside of Door

*Detail "A"



Hold the knob and slide the Outside Cover (Part-C) into the opening. Slide the Outside Cover (Part-C) forward all the way until it snaps firmly into place. If your finger pressure is not adequate, carefully tap it into place using a mallet and the flat edge of a screwdriver against the *cover's edge.



INSTALLATION NOTE:

The slide bar of the Interior Latch (Part-A) will engage within the slot of the strike & keeper (shown at right). After the strike & keeper has been installed, **use a mallet to drive a screwdriver through the slot.** This will displace the edge molding of the pilaster and allow greater travel of the slide bar.