



**PARTITION  
STALLS**

Custom Solutions for  
Commercial Bathrooms

# PRODUCT LOOKBOOK



Best Seller

# STANDARD HEIGHTS

Industry Standard

- DOORS** 58" TALL
- PANELS** 58" TALL
- PILASTERS** 84" TALL
- 12" GAP AT FLOOR**
- 4" TALL SHOES**



## ELITE MATERIAL \$ \$

DOORS 64" TALL 6" OR 9" GAP AT FLOOR  
PANELS 64" TALL 4" TALL SHOES  
PILASTERS 84" TALL



## ELITE PLUS MATERIAL \$ \$ \$

DOORS 72" TALL 4" OR 6" GAP AT FLOOR  
PANELS 72" TALL 4" TALL SHOES  
PILASTERS 84" TALL





## Most Specified Configuration

### OVERHEAD BRACED

- ✓ Two Points of Attachment
- ✓ Offers the most durable mounting configuration at a budget price
- ✓ 85" to top of stile

### FLOOR-TO-CEILING

- Two Points of Attachment ✓
- Durable mounting option even without the headrail ✓
- Small premium compared to Overhead-Braced ✓
- Accommodates up to 120" ceiling height ✓



### FLOOR ANCHORED

- ✓ One Point of Attachment
- ✓ Superior design for low-traffic, non-vandal prone restrooms
- ✓ Anchored into a solid substrate
- ✓ 70" to top of stile (Standard)
- ✓ 76-5/16" to top of stile (Max Height)

### CEILING-HUNG

- One Point of Attachment ✓
- Contemporary appearance, provides clear access for floor maintenance ✓
- Not appropriate for heavy-traffic, vandal-prone restrooms ✓
- Requires additional structure support ✓
- Accommodates up to 120" ceiling height ✓

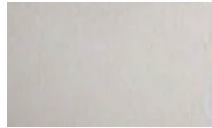


# STAINLESS STEEL

## STANDARD COLOR

PRICE \$150.00

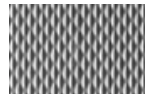
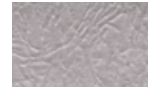
Satin ✓  
Lead time 6-7 Weeks ✓



## OPTIONAL COLORS

PRICE \$120.00

Leather ✓  
Lead time 10-12 weeks ✓



✓ Diamond  
✓ Lead time 10-12 weeks



Stainless Steel has a luxurious, modern appearance and sleek design. It is easily cleaned, rust-resistant, and durable. It is a prime consideration where appearance and strength are unmatched.

# POWDER COATED

## Industry Standard

Powder-coated finish applied over galvanized steel



# SOLID PLASTIC (HDPE)

Lead time 2-3 Weeks



White



Cream



\*Ivory  
Essence



Caramel



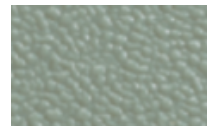
Mocha



Metallic  
Bronze



Olive



Moss



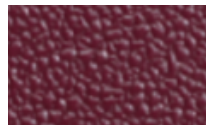
Hunter  
Green



Azure



Blue



Burgundy



Gray



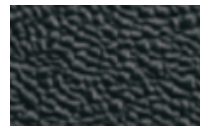
\*Folkstone  
Gray



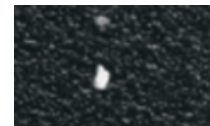
Metallic  
Silver



Charcoal



Black



Black  
Confetti



\*Not available in Tough Texture or Hammered finishes

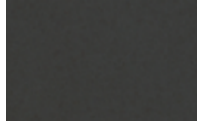
# PHENOLIC

## BLACK CORE

More economically priced than color-thru, great for any environment



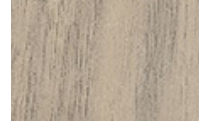
White  
Ash



Graphite



Neo  
Walnut



Kingswood  
Walnut



Silver Oak  
Ply



Asian  
Night



Taupe



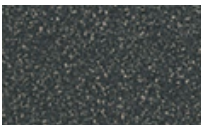
Silver  
Gray



Folkstone  
Celesta



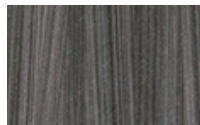
Dove  
Gray



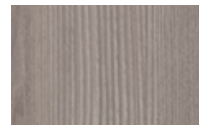
Graphite  
Grafix



Aged  
Ash



Burnt  
Strand



Weathered  
Ash



Graphite  
Blue

## COLOR-THRU

Premium material where the surface color goes through



Sahara  
Beige



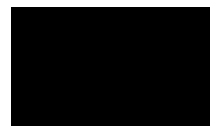
Dark Grey



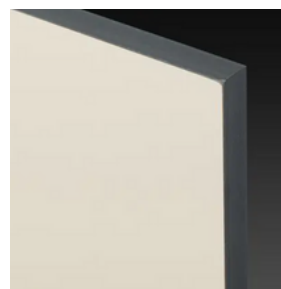
Pastel  
Grey



Charcoal



Black



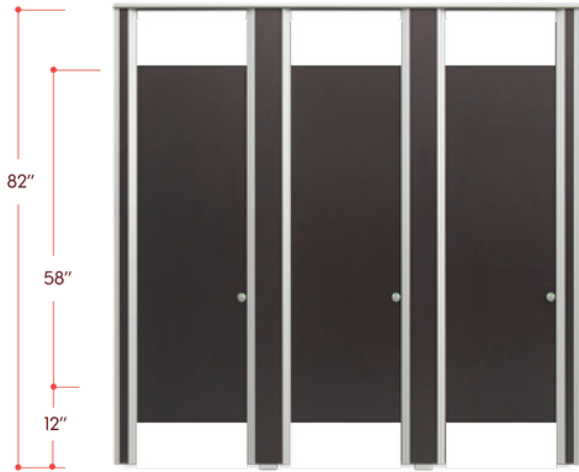
Black Core



Color-Thru

# ULTIMATE PRIVACY

Available in Phenolic, Stainless Steel, and Powder-coated steel in all mounting styles.



## STANDARD

DOORS 58" TALL

PANELS 12" above finished floor

Additional options include no-sight doors, privacy strips, and full-length continuous brackets.



## EXTRA

DOORS 64" TALL

PANELS 6" above finished floor

Full length continuous brackets and privacy strips for no-sight doors are included.



## MAX

DOORS 72" TALL

PANELS 6" above finished floor

Full-length continuous brackets and privacy strips for no-sight doors are included.